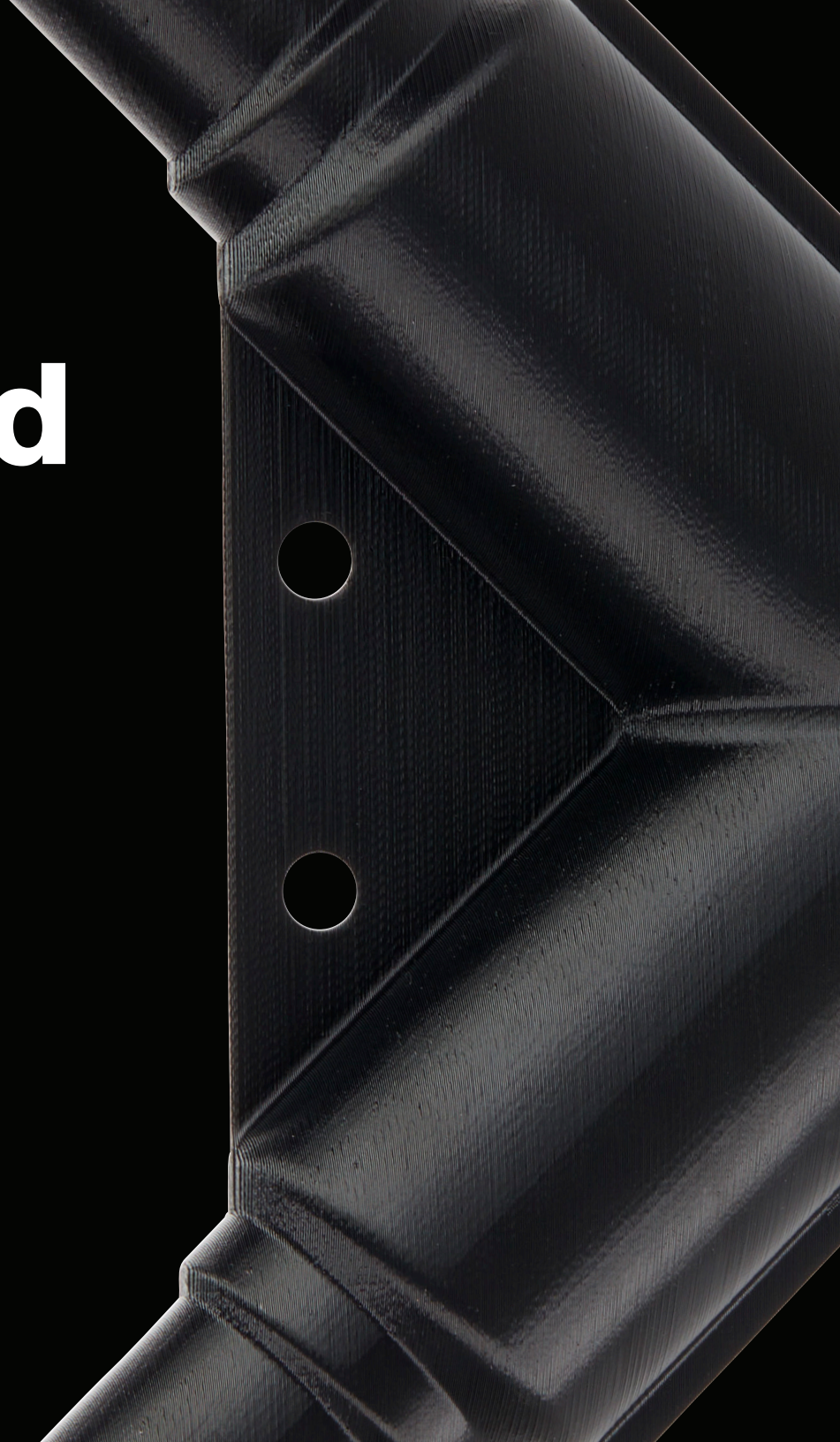


# Precision and Possibilities

Explore Stratasys® F123™/F123CR Series and  
F770™ Applications

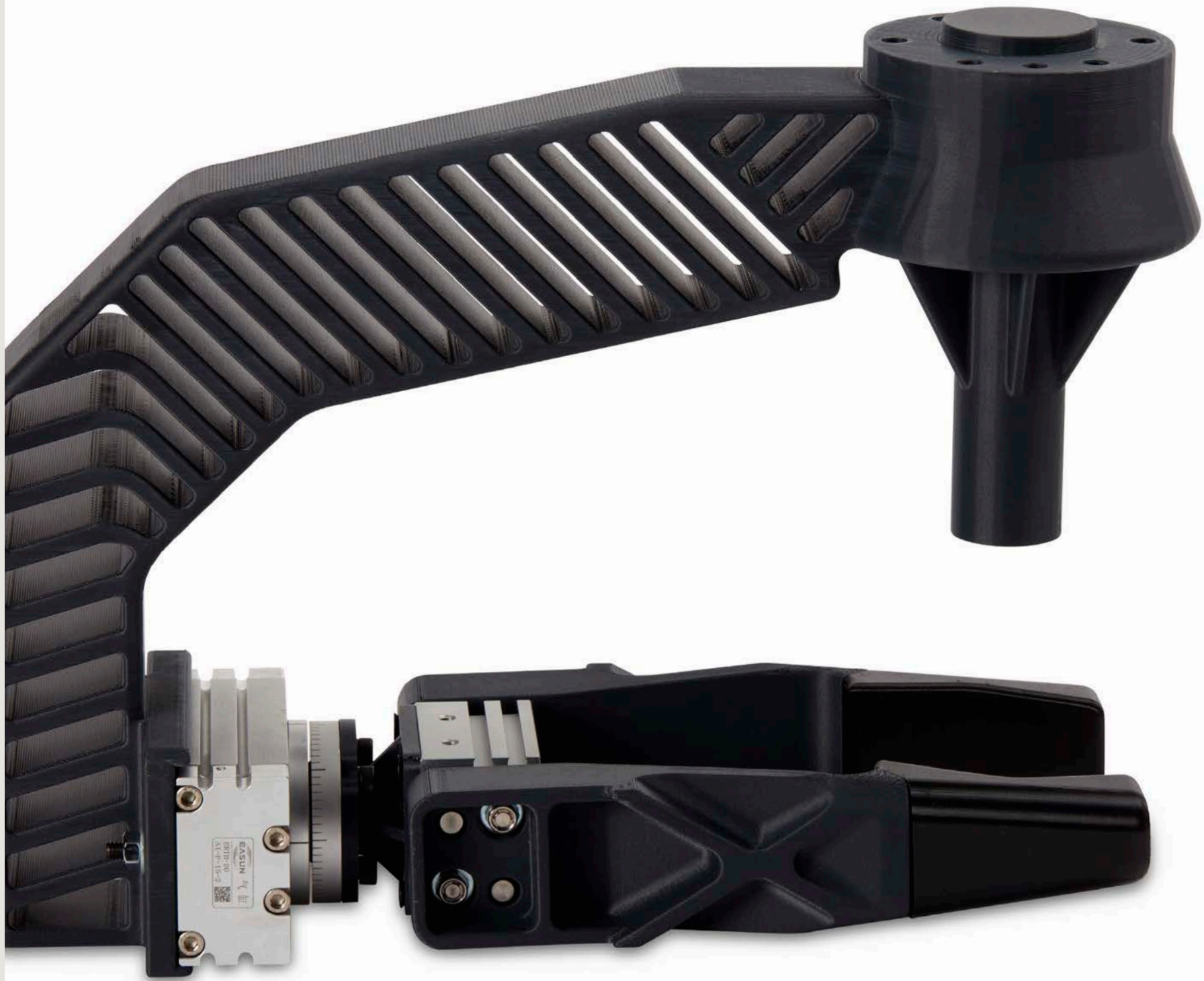


# See What's Possible

The possibilities are nearly endless with the F123, F123CR composite series and F770 printers. From complex parts to high-strength tooling to economical prototypes, these 3D printers can provide you with the fast, repeatable accuracy you need to power your business forward. This sampling of applications is just a taste of what can be achieved.



Note: F770 is only enabled to print ASA Ivory and ABS-M30 Black.

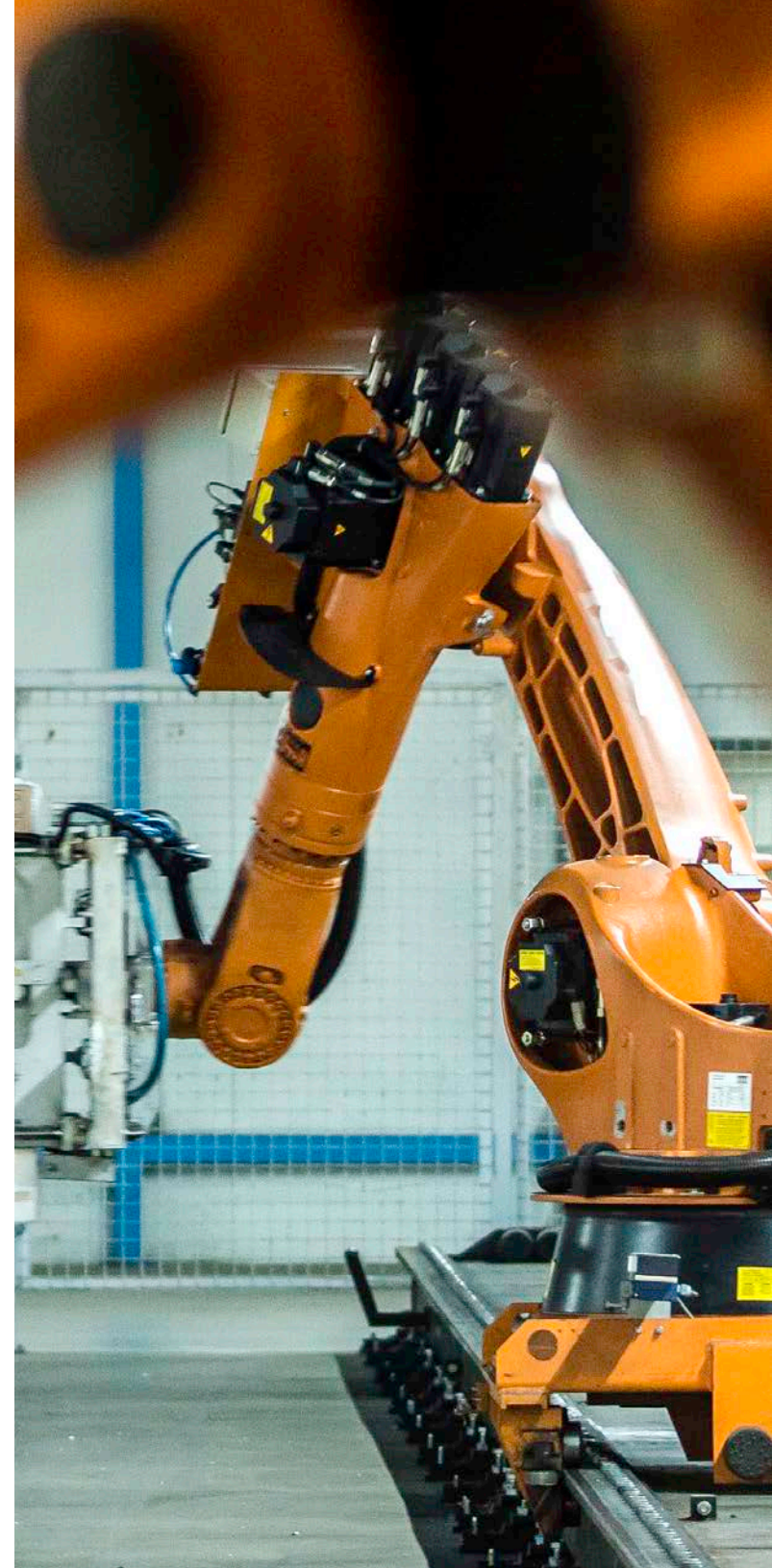




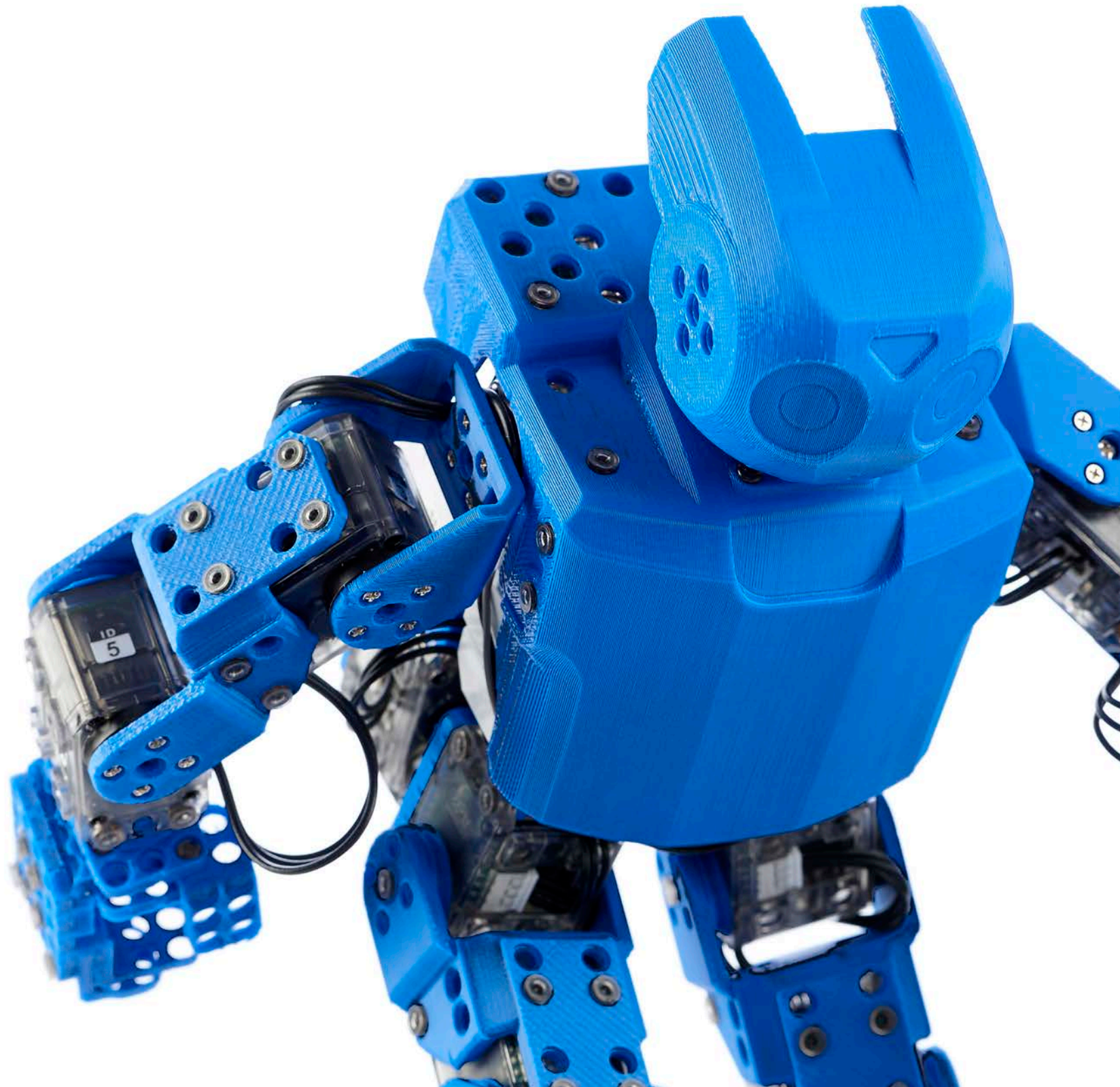
## End Effector (Extension Fixture)

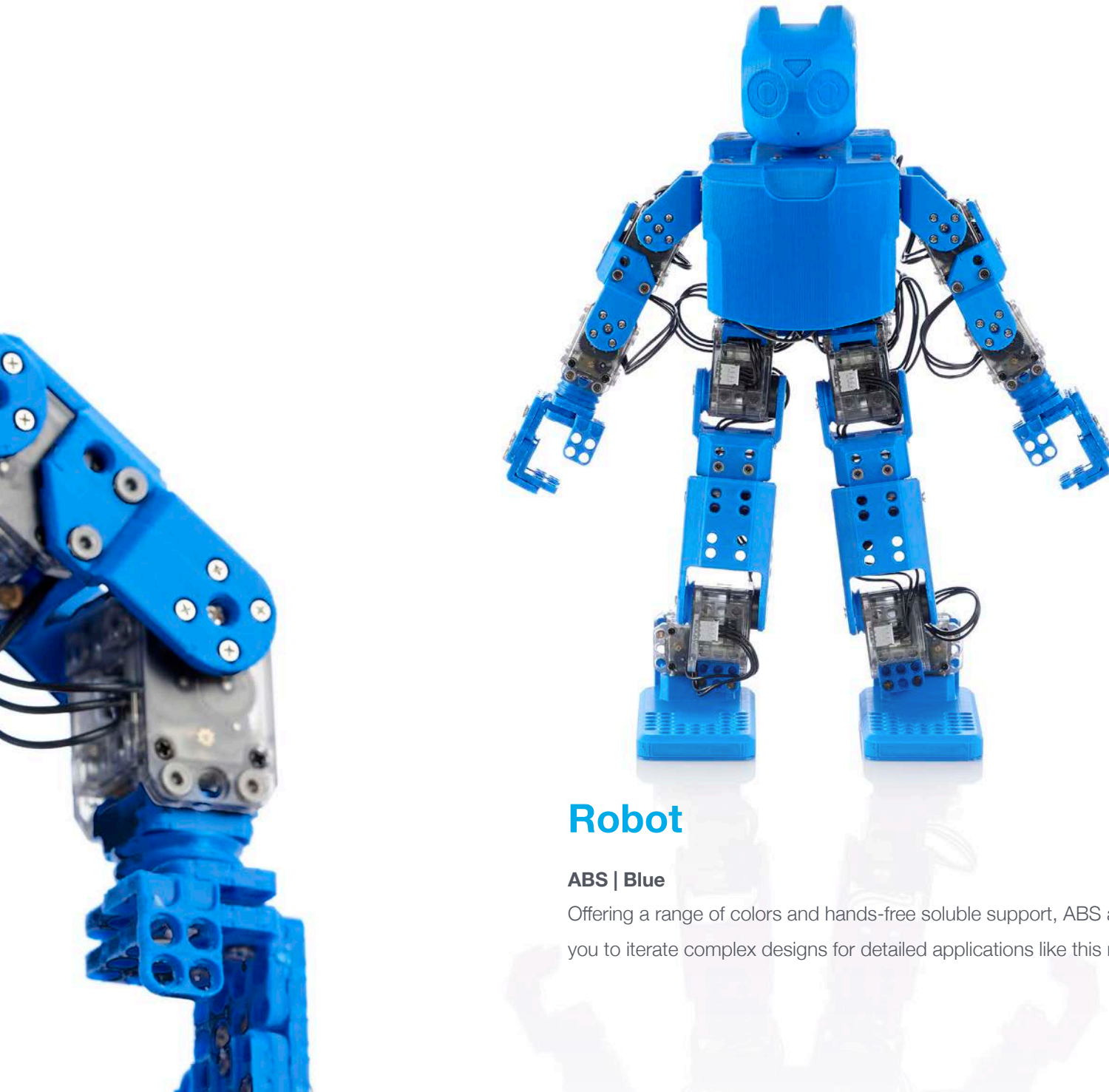
### ABS-CF10 | Manufacturing Aid

Strong, stiff and lightweight, ABS-CF10 carbon fiber material is well suited for high-use parts that require durability such as this robotic arm extension fixture.



Note: This part uses ABS-CF10 and can only be printed on the F170™, F270™ and F370™.





## Robot

### ABS | Blue

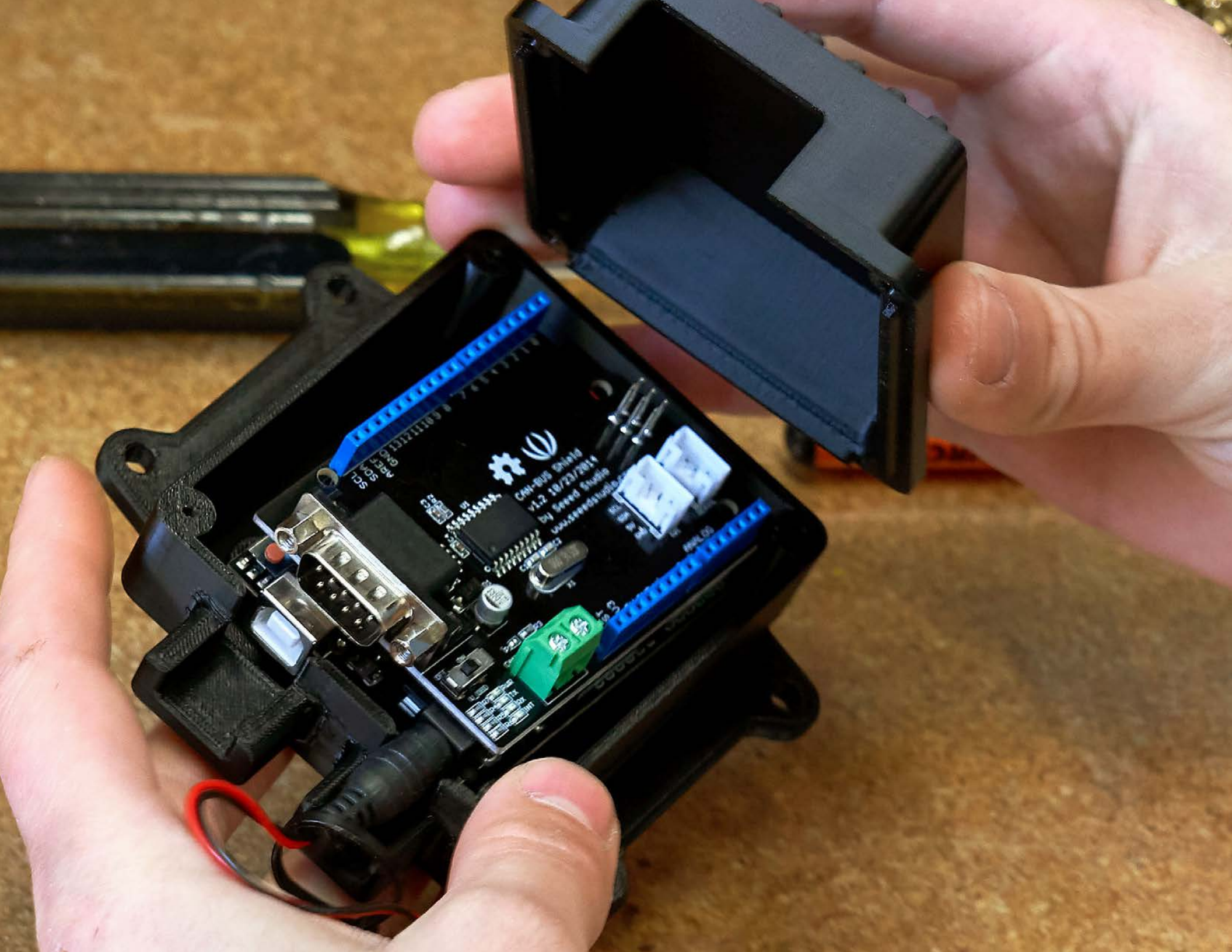
Offering a range of colors and hands-free soluble support, ABS allows you to iterate complex designs for detailed applications like this robot.

## Electric Enclosure

ABS-ESD7™ | Black

The durable and electrostatic-dissipative properties of ABS-ESD7 make it an ideal choice for electronic components such as this electric enclosure.





ESP8266  
V1.2 10/23/2014  
by Speed Studio  
www.speedstudio.com

SCL  
M5V  
GND

M5V  
GND

20  
11

## UTV Gearbox Prototype

### ASA | Ivory

Offering high mechanical strength, production-grade quality and UV stability, ASA printed on the F123 Series is well-suited for form and fit testing of automotive prototypes.

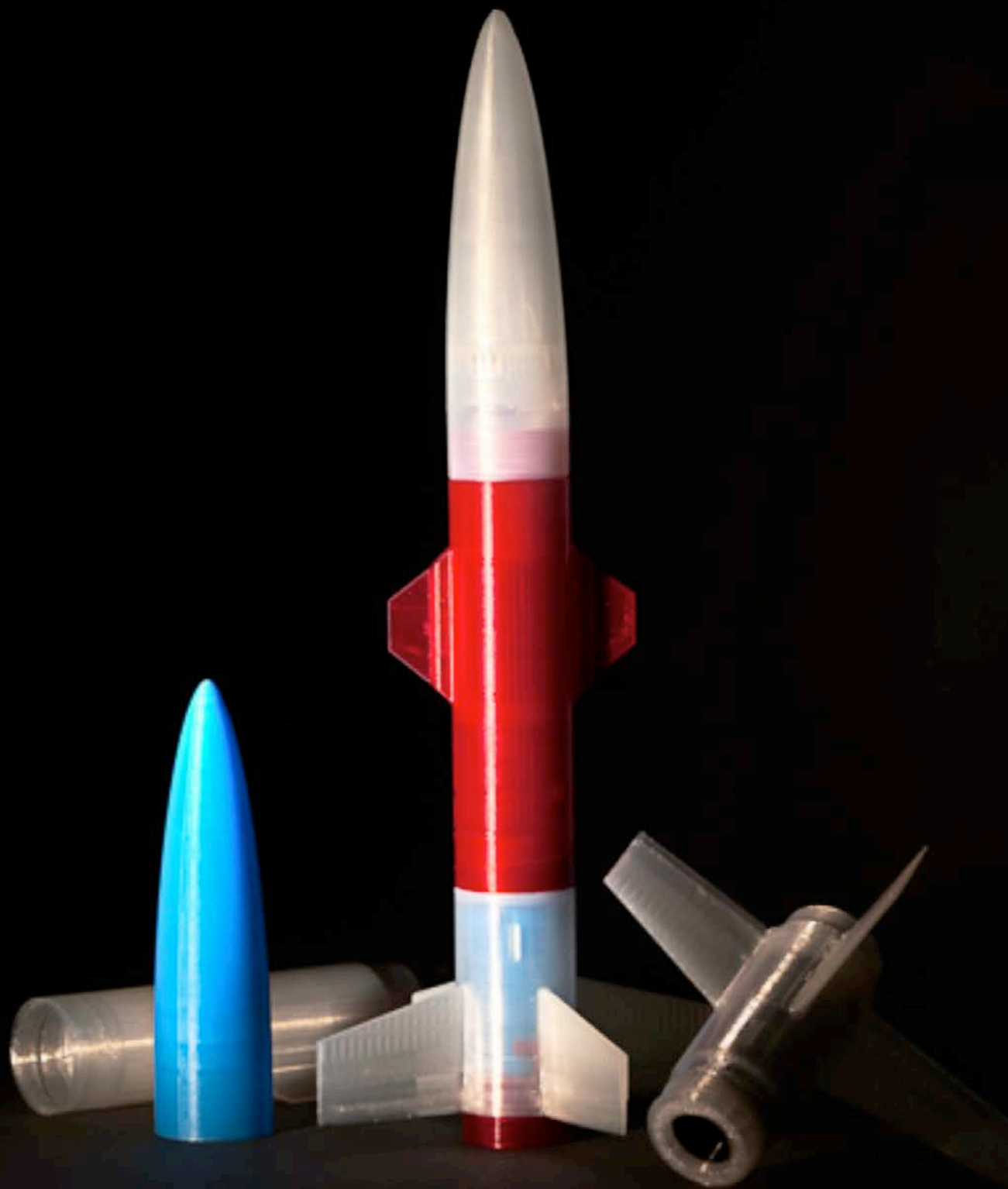




## Rocket

### **PLA | Red, White, Blue, Black**

Printing in fast-draft mode on the F123 Series, PLA allows for translucent parts and economical design options — making it well-suited for early concept models or educational projects.





Note: Due to size, this part can only be produced on the F770 3D printer.

## Race Car Hood

### **ABS-M30 | Prototype**

Using FDM technology with ABS-M30 material enables you to achieve large custom designs like this hood vent with improved part performance and productivity.

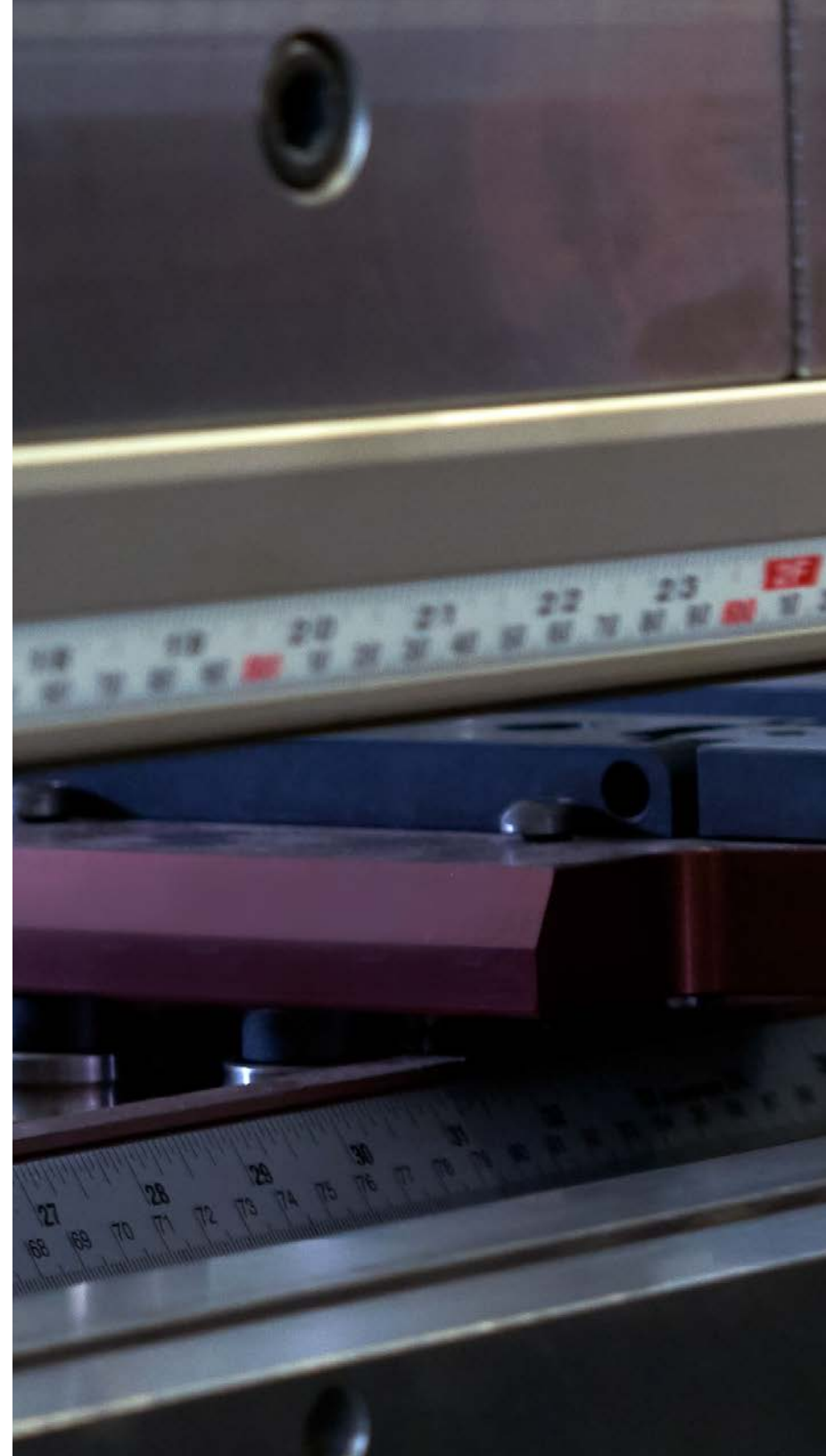




## Sheet Metal Brake Forming Tools

### Diran 410MF07 | Gray

Due to the lubricity of the forming tools 3D printed with Diran™ 410MF07, sheet metal brake parts easily bend and flow into shape.











## Outlet Cover

### **ASA | Ivory**

As a material that offers UV resistance and strength, ASA is ideal for outdoor-use production parts like this outdoor outlet cover.



A close-up, shallow depth-of-field photograph of a hand truck tire prototype. The tire is black and textured, resting on a light-colored, possibly metal, workbench. In the foreground, a pair of worn, olive-green work gloves and a pair of black-handled pliers are scattered on the surface. The background is a blurred industrial setting with concrete floors and metal structures.

## Hand Truck Tire Prototype

### **FDM TPU 92A | Black**

The durable elasticity of FDM® TPU 92A™ makes it a good choice for a wide variety of large and complex, rubber-like applications, including this tire prototype.





## Planetary Gear

**QSR Soluble Support + ASA | Yellow**

By combining ASA and QSR Soluble Support™, you can create intricate parts with working components, like this planetary gear system, in one print.





## Snowmobile Ski

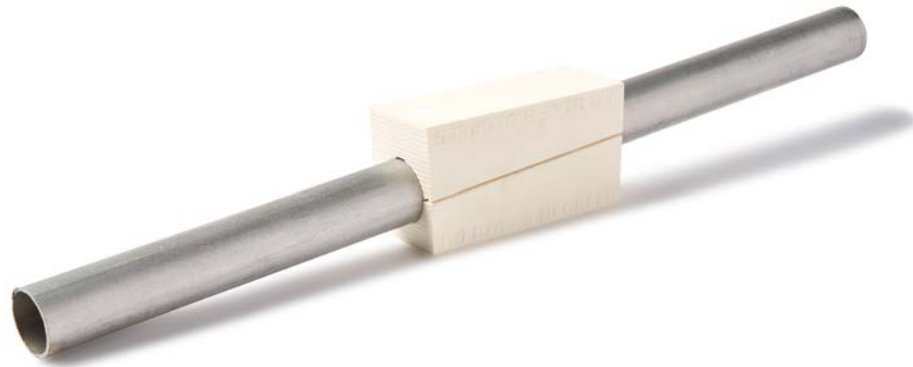
### ASA | Functional Prototype

Offering mechanical strength, UV resistance and aesthetics, ASA printed on the F770™ 3D printer works well for large prototypes meant for heavy outdoor use.

Note: Due to size, this part can only be produced on the F770 3D printer.







## Band Saw Angle Cutting Fixture

### PC-ABS | Ivory

Strong and durable, PC-ABS (polycarbonate-ABS) is a high-impact engineering thermoplastic that's ideal for tooling applications such as this band saw angle cutting fixture.

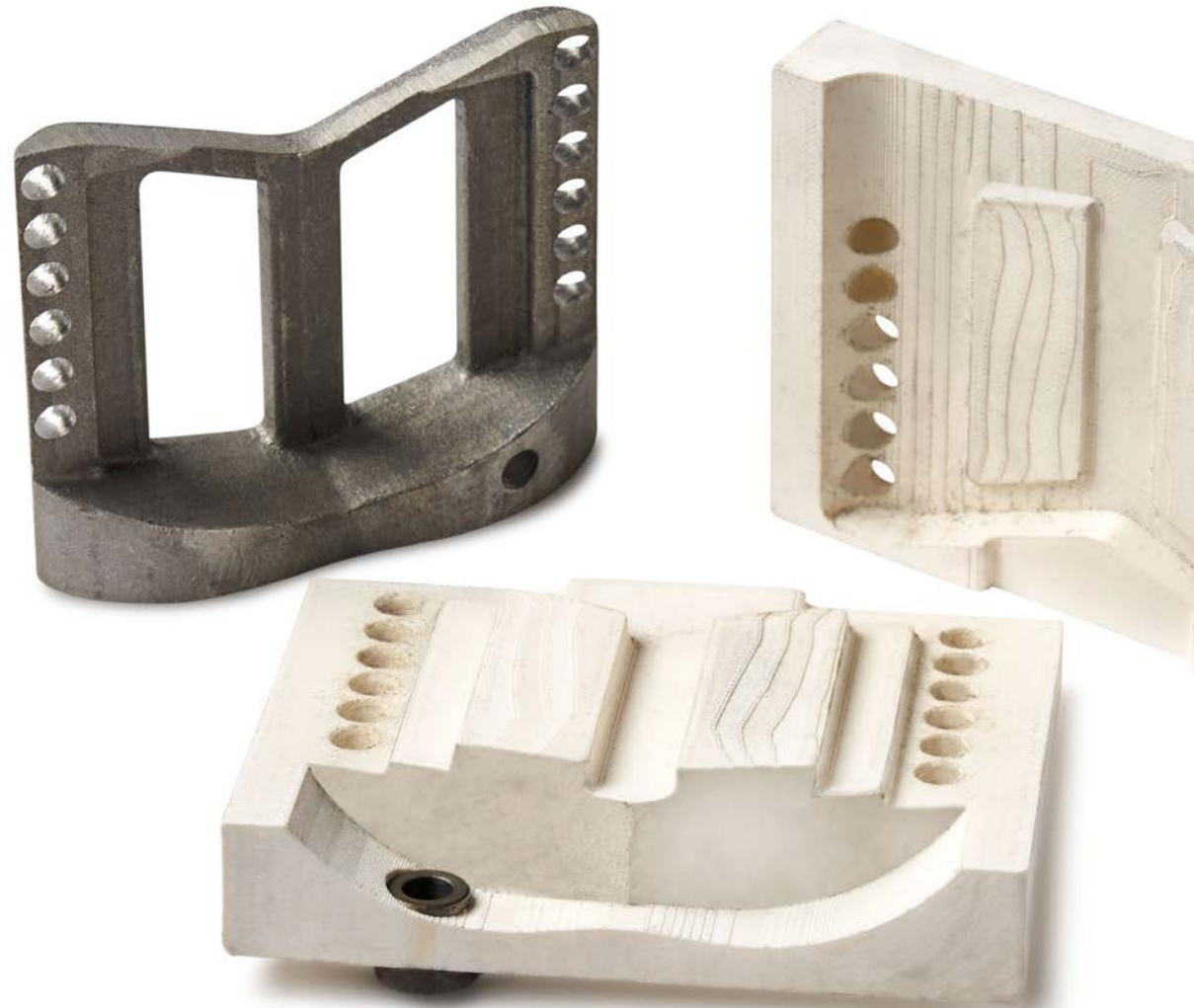


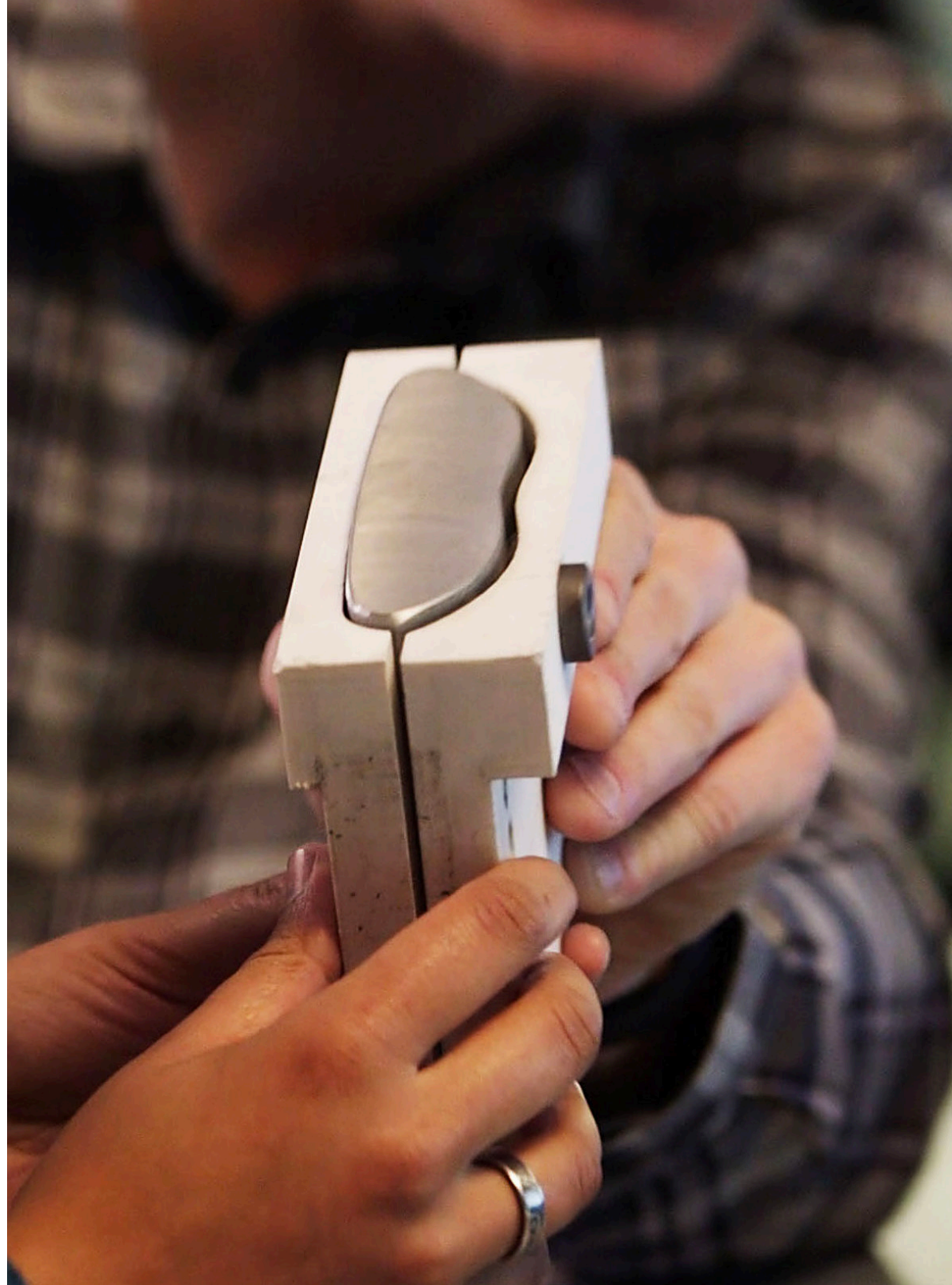


## Golf Putter Casting Pattern

### ASA | White

ASA's production-grade quality and ease of use make it well-suited for iterative design such as the refinement of casting patterns.

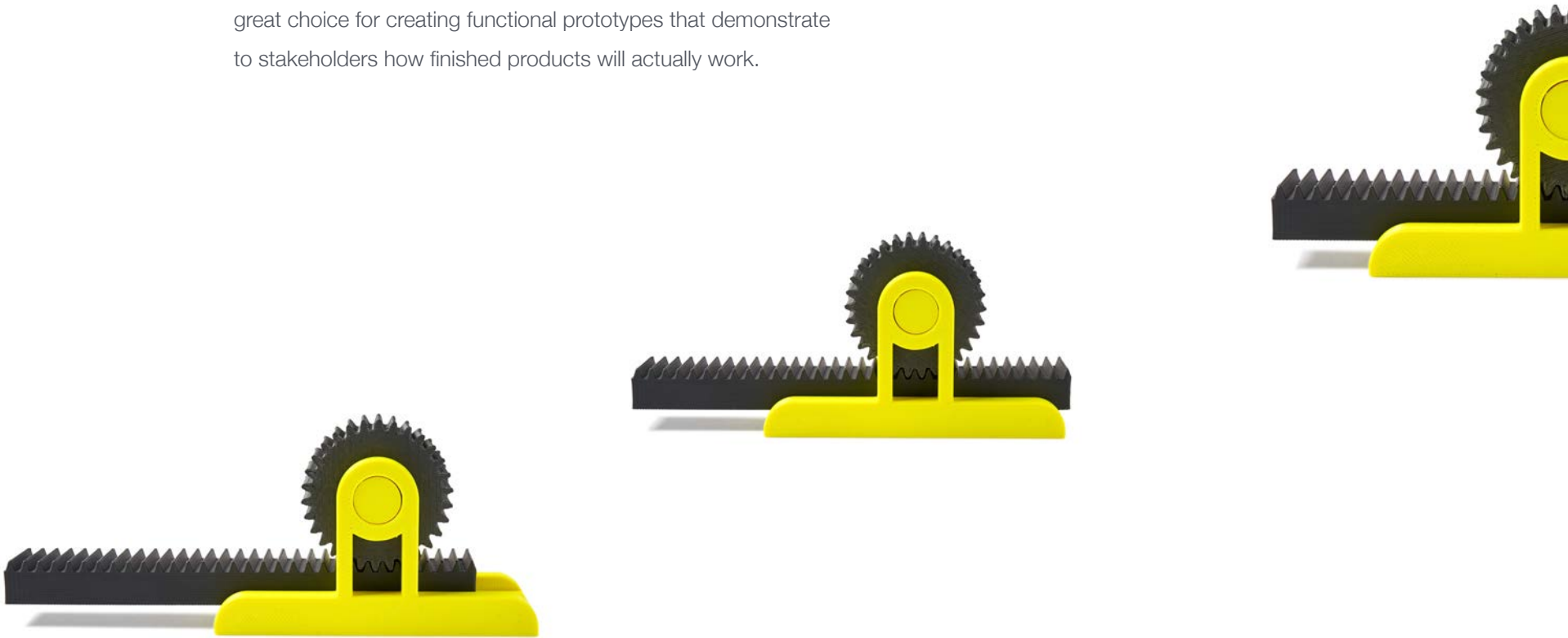




## Rack & Pinion Prototype

### Diran + ASA | Yellow

The smooth surface finish provided by Diran in combination with the color options and production quality provided by ABS, is a great choice for creating functional prototypes that demonstrate to stakeholders how finished products will actually work.

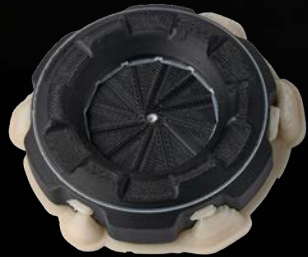




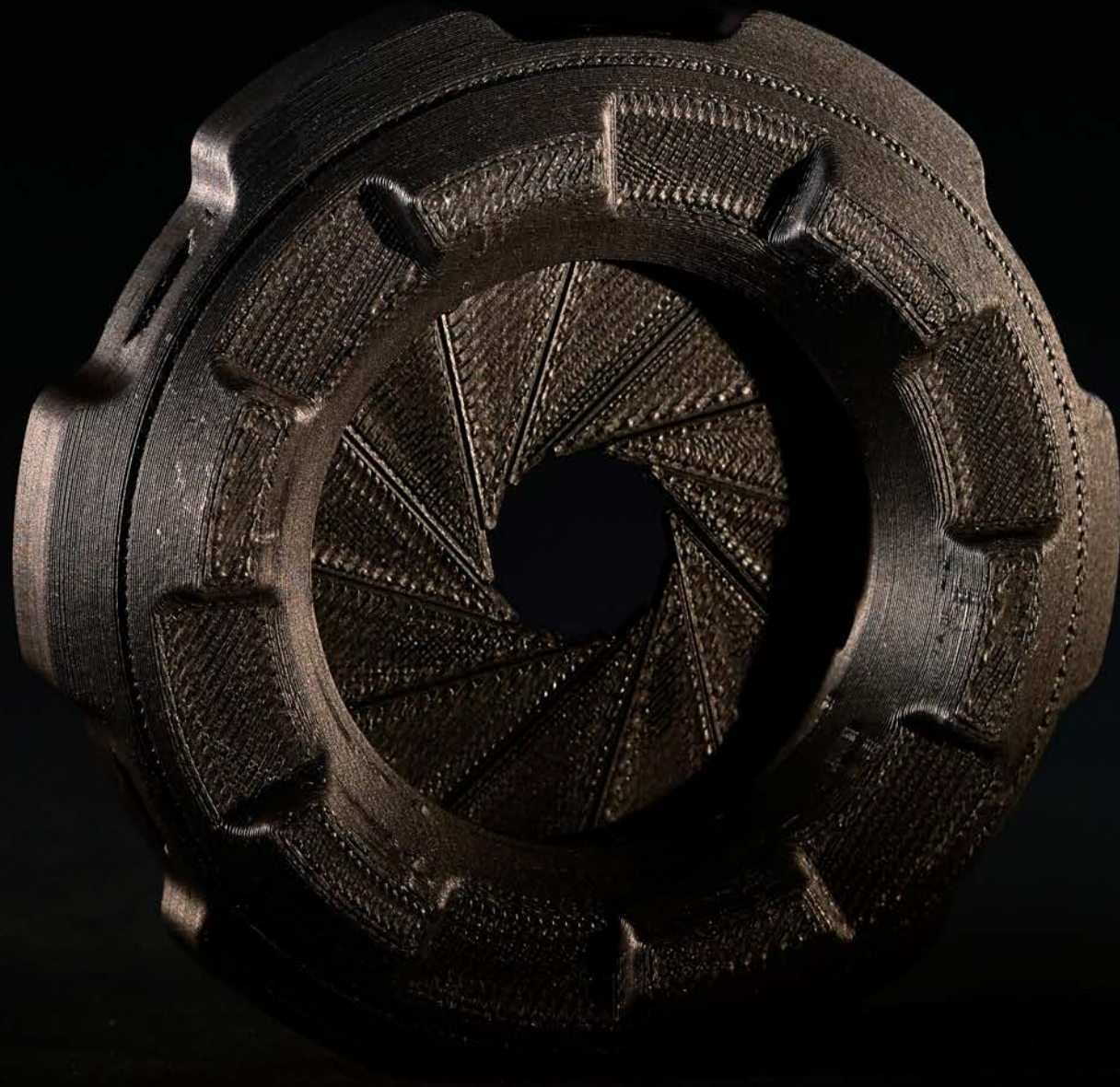
## Camera Lens Cover

### QSR Soluble Support + ASA | Black

By combining ASA and QSR Soluble Support, you can create intricate parts with working components in one print — like this camera lens that can be opened and closed in one quick twist.









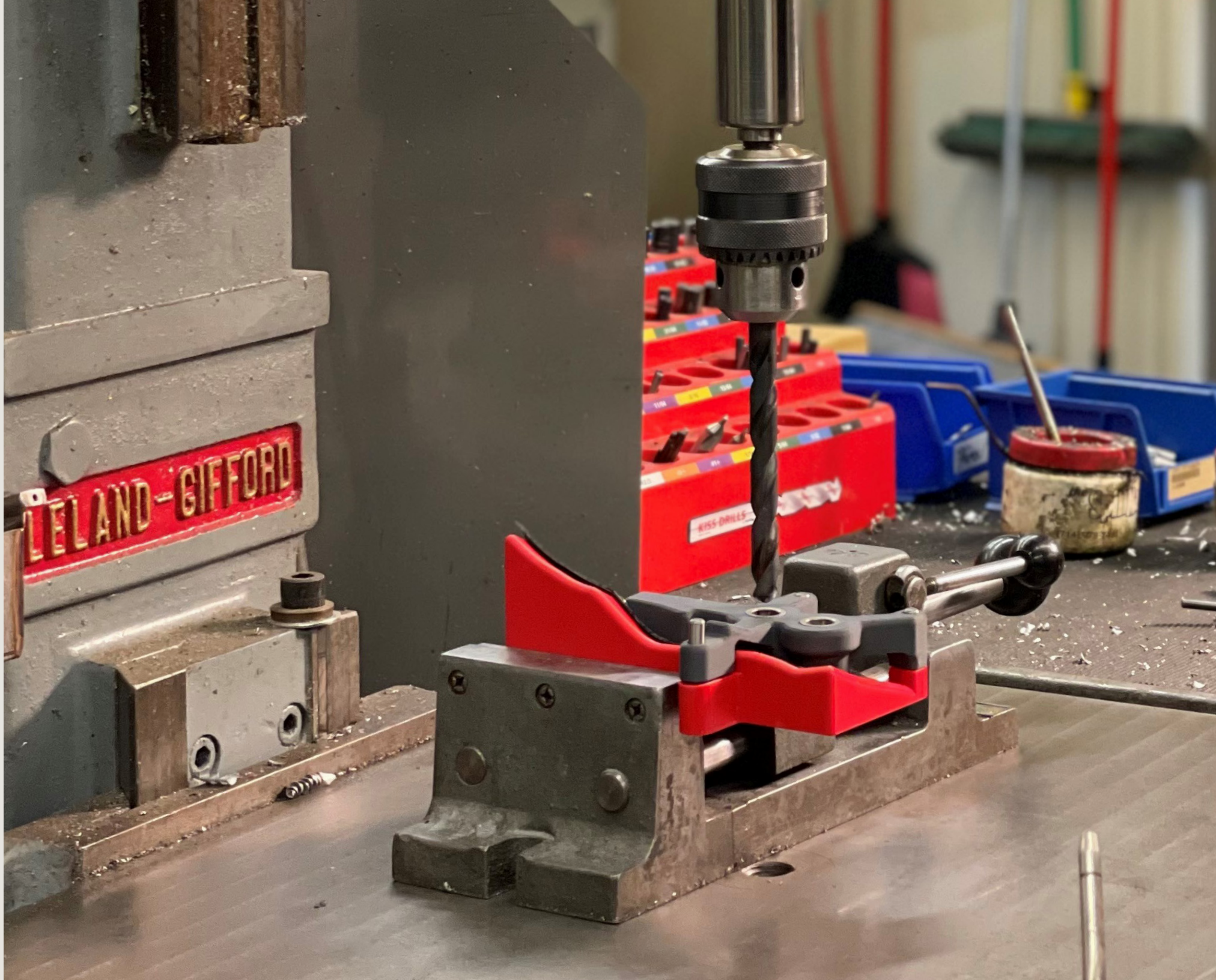
## Switch Housing

### PC-ABS | Black

Strong and durable, PC-ABS is ideal for functional and end-use parts in manufacturing, such as this custom-built switch housing for a water jet cover.









## Drill Guide

### FDM Nylon-CF10 | Dark Gray

Carbon fiber-filled FDM® Nylon-CF10 on the F190™CR and F370®CR composite printers has the stiffness required for rigid drill guides and accurate hole placement.

Note: FDM Nylon-CF10 is only available on the F190CR and F370CR composite printers.



## Appliance Base

### ABS-M30 | Prototype

This large prototype part printed in ABS-M30 was used to validate the fit of a clothes dryer base design. This type of prototype demonstrates the F770's capability to print large parts with thin walls and complex features.



Note: Due to size, this part can only be produced on the F770 3D printer.

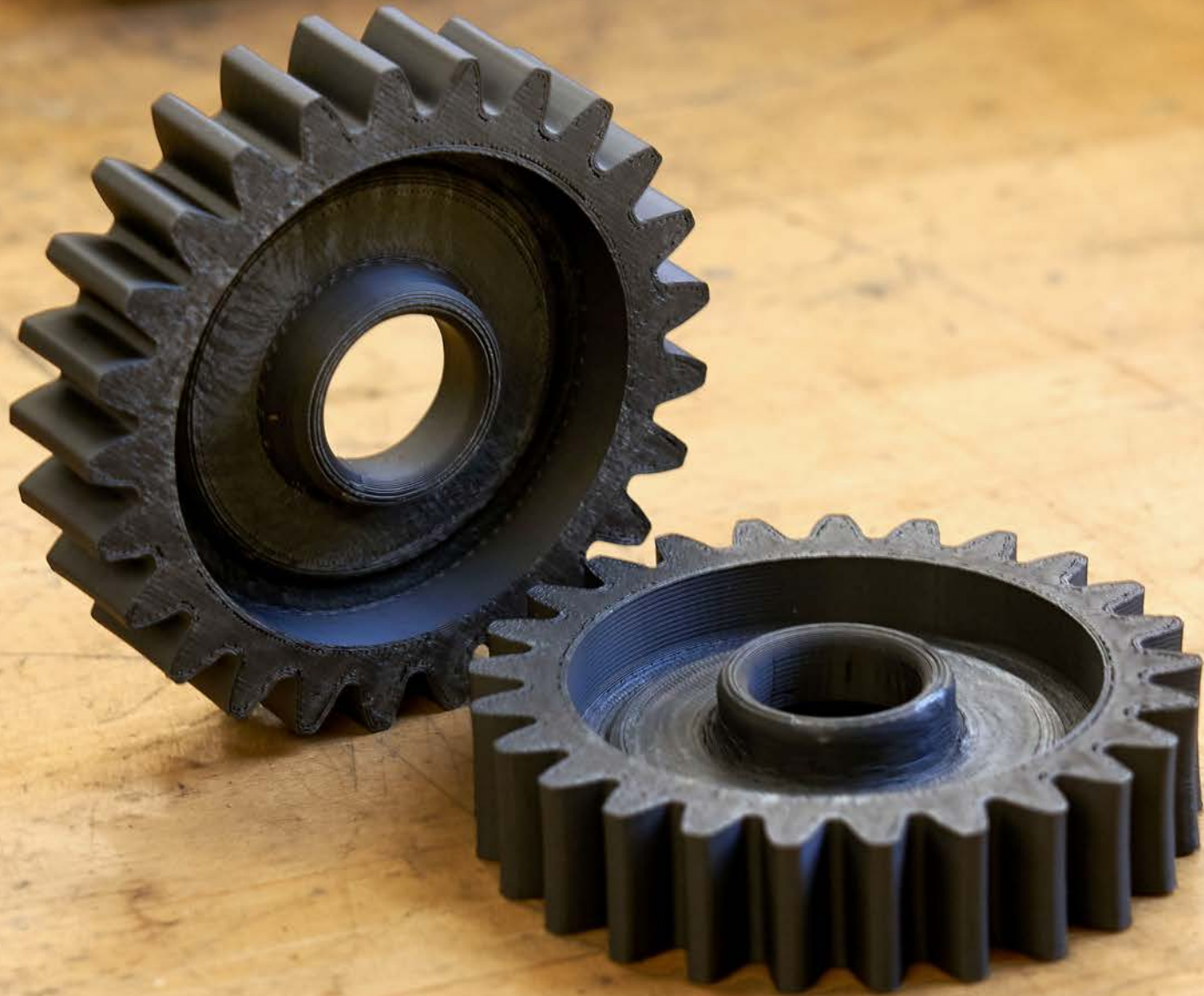


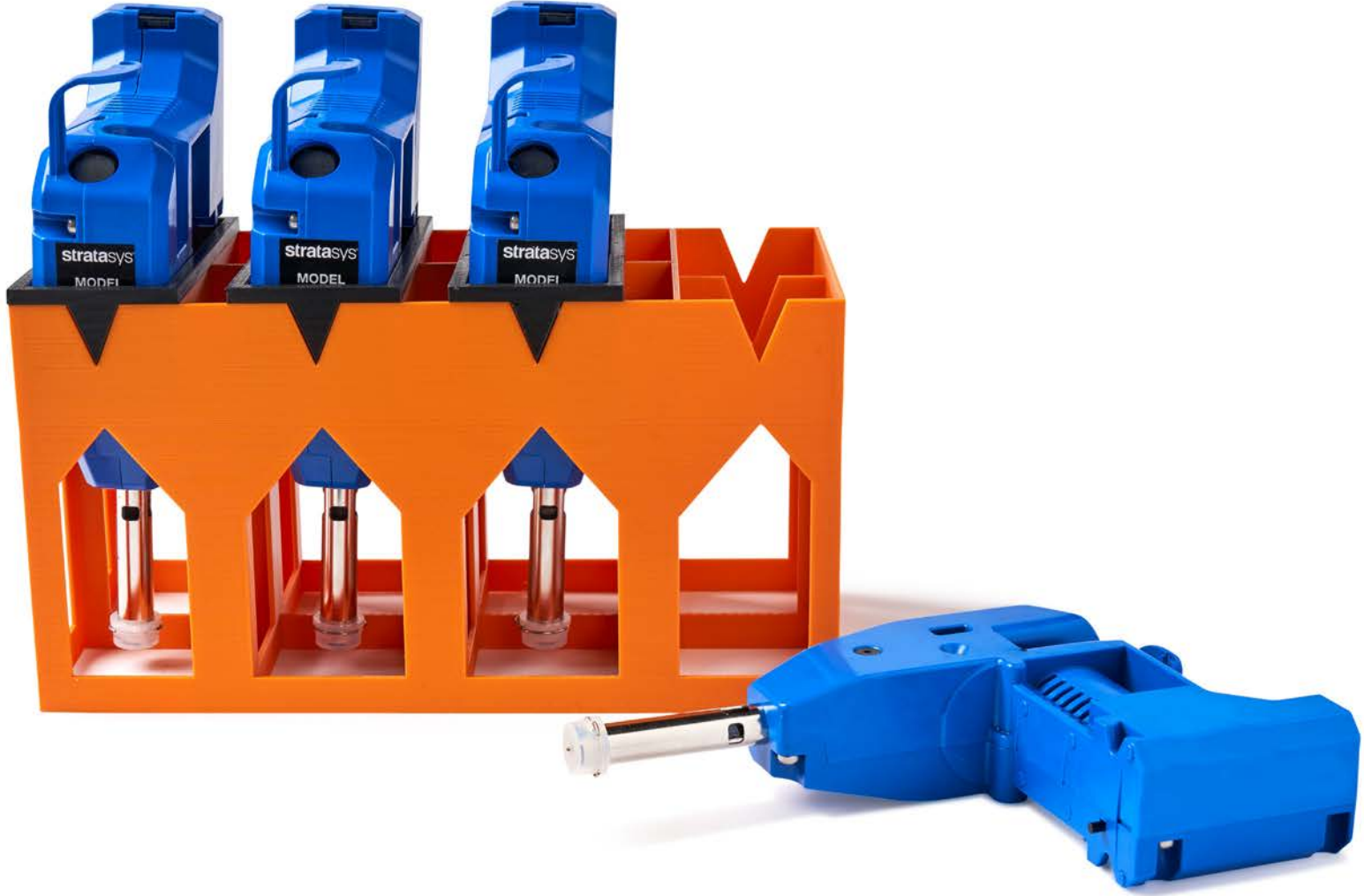
## Replacement Parts

### Diran | Grey

The exceptional toughness, hydrocarbon-based chemical resistance and lubricity of Diran make it an ideal choice for replacement parts like this small machine component.







## Extruder Head Assembly Jig Holder

**ASA + FDM TPU 92A | Yellow**

The high mechanical strength and production-grade quality of ASA in combination with the rubber-like texture of FDM TPU 92A creates a durable, non-marring surface for assembly fixtures.





## Shock Absorber Working Assembly

**ABS | Red**

Durable enough to perform virtually the same as production parts, ABS was ideal for prototyping this shock absorber.





## Polaris Fixture

**FDM TPU 92A | Black**

Combining flexibility and stretch with abrasion and tear resistance, FDM TPU 92A is ideal for demanding manufacturing applications such as this assembly fixture.







## Car Fender

### ABS-M30™ | Prototype

When reliability and accuracy are required, ABS-M30 printed on the F770 3D printer delivers large parts with complex geometries and tight tolerances.



Fender prototype painted for aesthetic purposes.



Note: Due to size, this part can only be produced on the F770 3D printer.







## Air Duct Plenum

### ASA | Grey

Offering high mechanical strength and production-grade quality, ASA is well-suited for decreasing the time and cost it takes to create complex, end-use parts.

## Start Achieving **Reliable Results**

Visit [Stratasys.com](https://www.stratasys.com) for more information about the F123/F123CR series and F770 3D printers.

© 2022 Stratasys. All rights reserved. Stratasys, the Stratasys Signet logo, F370CR and FDM are registered trademarks of Stratasys Inc. F123 Series, F190CR, F770, ABS-M30, ABS-ESD7, Diran 410MF07, FDM TPU 92A, FDM Nylon-10CF and QSR Soluble Support are trademarks of Stratasys, Inc. All other trademarks are the property of their respective owners, and Stratasys assumes no responsibility with regard to the selection, performance, or use of these non-Stratasys products. Product specifications subject to change without notice. LB\_FDM\_F770\_FSeries\_0322a

